

# AZUD LUXON

## AZUD LUXON LDB

Automatic electric screen filters suitable for all applications, and available in a wide range of micron sizes, all with the same high quality guarantee of AZUD.



## ADVANTAGES

- ✓ **Energy Efficient:** The consumption of water in the flushing cycle is minimal.
- ✓ **Wide selection of screens:** Screens available from 10 to 1000 micron (SS support), 80 to 1000 micron (PVC support or M.S. support).
- ✓ **Versatility:** Inlet/Outlet from 2" to 20" // 50 to 500 mm.
- ✓ **Resistance:** Temperature to 60 °C (140 °F).
- ✓ **Large screen area:** Up to 21300 cm<sup>2</sup> (3300 in<sup>2</sup>).
- ✓ **Resistant material:** The screen is made in stainless steel of high quality resistant to corrosion.
- ✓ **Time saving:** The filtration process and the flushing cycle occur simultaneously.
- ✓ **Easy installation:** The filters are delivered to be installed.

There are solutions available for working with pressures higher than 1 bar / 145 psi or saline water. Control unit is included.

## TECHNOLOGY

AZUD LUXON filters continue to supply filtered water without interruption during the flushing cycle.

The water flows through the inlet (1) and enters the inside of the filter element.

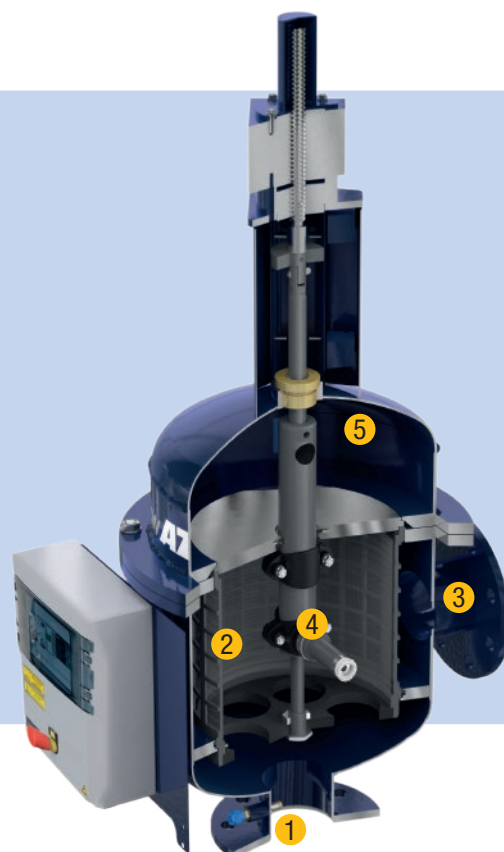
The water then passes through the screen (2), and the particles are retained on the inside of the filter element (screen). The filtered water then flows out through the outlet (3).

When the pressure differential from inlet to

outlet of the filter reaches the pre-selected level the flushing cycle starts ( $\Delta P$ ).

A hydraulic valve opens in the drain port, which initiates suction in the inner nozzles (4). This, along with the helical movement up and down the screen sucks the captured particles into the waste flow, and this is expelled out the drain port. (5)

The length of the flush cycle is pre-determined by the control unit. When the cycle is complete the flush valve closes and the flushing ends. The flushing process uses a minimal amount of water.



# AZUD LUXON

## AZUD LUXON LDB

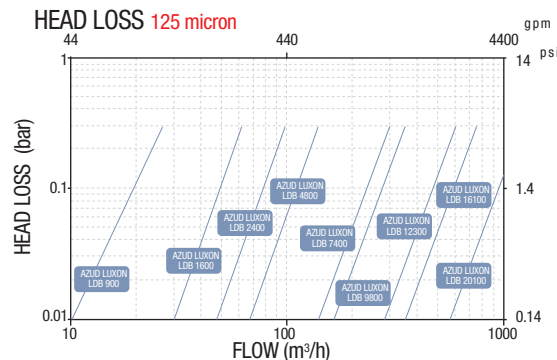
Model	Support of screen	DN CONNECTION				Filtration Surface	
		Inlet - Outlet Flange		Drainage Female - Thread		cm <sup>2</sup>	in <sup>2</sup>
		"	mm	"	mm		
AZUD LUXON LDB 900/2	PVC	2"	50	1"	32	910	140
AZUD LUXON LDB 1600/3	PVC	3"	80	1"	32	1600	250
AZUD LUXON LDB 2400 M/4	M.S.	4"	100	1"	32	2400	370
AZUD LUXON LDB 4800 M/6	M.S.	6"	150	1"	32	4800	745
AZUD LUXON LDB 7400 M/8	M.S.	8"	200	2"	63	7350	1140
AZUD LUXON LDB 9800 M/8	M.S.	8"	200	2"	63	9800	1520
AZUD LUXON LDB 12300 M/10	M.S.	10"	250	2"	63	12250	1900
AZUD LUXON LDB 16100/10	PVC	10"	250	2"	63	16100	2495
AZUD LUXON LDB 20100/12	PVC	12"	300	2"	63	20100	3115
AZUD LUXON LDB 1000 S/2	SS	2"	50	1"	32	1000	155
AZUD LUXON LDB 1000 S/3	SS	3"	80	1"	32	1000	155
AZUD LUXON LDB 1800 S/3	SS	3"	80	1"	32	1760	275
AZUD LUXON LDB 2700 S/4	SS	4"	100	1"	32	2650	410
AZUD LUXON LDB 5400 S/6	SS	6"	150	1"	32	5380	835
AZUD LUXON LDB 5400 S/8	SS	8"	200	1"	32	5380	835
AZUD LUXON LDB 8000 S/8	SS	8"	200	2"	63	8000	1240
AZUD LUXON LDB 10600 S/10	SS	8"	200	2"	63	10600	1645
AZUD LUXON LDB 13200 S/10	SS	10"	250	2"	63	13210	2050
AZUD LUXON LDB 13200 S/12	SS	12"	300	2"	63	13210	2050
AZUD LUXON LDB 16500 S/12	SS	12"	300	2"	63	16500	2560
AZUD LUXON LDB 16500 S/14	SS	14"	350	2"	63	16500	2560
AZUD LUXON LDB 21300 S/14	SS	14"	350	2"	63	21300	3300
AZUD LUXON LDB 21300 S/16	SS	16"	400	2"	63	21300	3300

All models are with flange connections. DIN 2576 • Ask for the rest of configurations in [www.azud.com](http://www.azud.com).

### MATERIAL

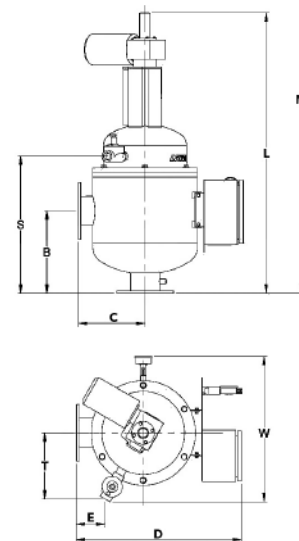
Housing-Lid	Epoxy-Polyester coated carbon steel S-235-JR EPOXY-POLYESTER coated)
Filtration Element	Stainless Steel AISI-316L screen PVC, Stainless Steel AISI-316L or molded screen support structure
Cleaning Mechanism	Stainless Steel AISI-304 scanner
Seals	NBR
Exhaust Valve	Reinforced Polypropylene

Flushing control unit included 220 V AC. 380 V AC available.  
Max. Pressure 10 bar / 145 psi • Min. Pressure 2 bar / 29 psi  
Max. Temperature 60 °C / 140 °F • Operation Voltage 220 V single-phase  
1/4 CV Motor (220 V). Power consumption 0.72 A



Model	Support of screen	CONNECTION		FILTRATION			FLUSHING CYCLE					
		Inlet - Outlet Flange		Filtration Surface	Max. flow	Flow rate		Time	Volume			
		"	mm	cm <sup>2</sup>	in <sup>2</sup>	m <sup>3</sup> /h	gpm	l/s	gpm	s	l	g
AZUD LUXON LDB 900/2	PVC	2"	50	910	140	30	132	0.7	11	8	5.6	1.45
AZUD LUXON LDB 1600/3	PVC	3"	80	1600	250	50	220	1	16	16	16	4.1
AZUD LUXON LDB 2400 M/4	M.S.	4"	100	2400	370	90	396	1.1	17	18	19.8	5.1
AZUD LUXON LDB 4800 M/6	M.S.	6"	150	4800	745	170	749	2.5	40	21	52.5	13.6
AZUD LUXON LDB 7400 M/8	M.S.	8"	200	7350	1140	300	1321	4.5	71	25	112.5	29.1
AZUD LUXON LDB 9800 M/8	M.S.	8"	200	9800	1520	300	1320	5.8	92	25	145	37.5
AZUD LUXON LDB 12300 M/10	M.S.	10"	250	12250	1900	500	2200	7.2	114	25	180	46.6
AZUD LUXON LDB 16100/10	PVC	10"	250	16100	2495	500	2200	5.8	92	25	145	37.5
AZUD LUXON LDB 20100/12	PVC	12"	300	20100	3115	700	3080	7.2	114	25	180	46.6
AZUD LUXON LDB 1000 S/2	SS	2"	50	1000	155	30	132	0.7	11	8	5.6	1.45
AZUD LUXON LDB 1000 S/3	SS	3"	80	1000	155	50	220	0.7	11	8	5.6	1.45
AZUD LUXON LDB 1800 S/3	SS	3"	80	1760	275	50	220	1.0	16	16	16	4.1
AZUD LUXON LDB 2700 S/4	SS	4"	100	2650	410	90	396	1.0	16	18	19.8	5.1
AZUD LUXON LDB 5400 S/6	SS	6"	150	5380	835	170	749	2.5	40	21	52.5	13.6
AZUD LUXON LDB 5400 S/8	SS	8"	200	5380	835	270	1189	2.5	40	21	52.5	13.6
AZUD LUXON LDB 8000 S/8	SS	8"	200	8000	1240	300	1320	4.5	71	25	112.5	29.1
AZUD LUXON LDB 10600 S/10	SS	8"	200	10600	1645	500	2200	5.8	92	25	145	37.5
AZUD LUXON LDB 13200 S/10	SS	10"	250	13210	2050	500	2200	7.2	114	25	180	46.6
AZUD LUXON LDB 13200 S/12	SS	12"	300	13210	2050	660	2906	7.2	114	25	180	46.6
AZUD LUXON LDB 16500 S/12	SS	12"	300	16500	2560	700	3080	5.8	92	25	145	37.5
AZUD LUXON LDB 16500 S/14	SS	14"	350	16500	2560	825	3633	5.8	92	25	145	37.5
AZUD LUXON LDB 21300 S/14	SS	14"	350	21300	3300	850	3743	7.2	114	25	180	46.6
AZUD LUXON LDB 21300 S/16	SS	16"	400	21300	3300	1065	4690	7.2	114	25	180	46.6

The flow rate given by filter conditions the frequency of the flushing activation • Maximum recommended flow rate: 125 micron and water good quality.  
Min. flushing pressure: 2 bar / 29 psi in outlet manifold • Ask for other filtration grades.



Model	DIMENSIONS													WEIGHT								
	L		W		D		B		S		C		E		T		M		Full filter Weight		Empty filter Weight	
	mm	"	mm	"	mm	"	mm	"	mm	"	mm	"	mm	"	mm	"	mm	"	kg	lb	kg	lb
AZUD LUXON LDB 900/2	920	36.2	570	22.5	630	24.8	240	9.4	372	14.5	240	9.4	65	7.6	303	11.9	1170	46.1	103	227	40	88
AZUD LUXON LDB 1600/3	1015	39.2	575	22.7	630	24.8	290	11.4	467	18.4	240	9.4	60	2.4	311	12.3	1270	50	121	267	45	99
AZUD LUXON LDB 2400 M/4	1120	44.1	610	24	700	27.5	350	13.8	562	22.1	290	11.4	116	4.6	302	11.9	1370	53.9	190	419	60	132
AZUD LUXON LDB 4800 M/6	1395	54.9	710	27.9	700	27.5	500	19.7	878	34.6	290	11.4	62	2.4	395	15.5	1675	65.9	283	624	86	190
AZUD LUXON LDB 7400 M/8	2190	86.2	750	29.5	800	31.5	600	23.6	1257	49.5	350	13.8	350	13.6	378	14.9	2620	103.2	795	1752	270	595
AZUD LUXON LDB 9800 M/8	2470	97.2	750	29.5	800	31.5	900	35.4	1532	60.3	350	13.8	350	13.6	378	14.9	2900	114.2	953	2101	308	679
AZUD LUXON LDB 12300 M/10	2740	107.9	750	29.5	800	31.5	900	35.4	1807	71.1	350	13.8	350	13.6	378	14.9	1440	135.4	1096	2417	334	736
AZUD LUXON LDB 16100/10	2500	98.4	905	35.6	930	36.6	900	35.4	1570	61.8	400	15.7	400	15.7	453	17.8	3000	118.1	1323	2917	460	1014
AZUD LUXON LDB 20100/12	2770	109.1	905	35.6	930	36.6	900	35.4	1845	72.6	400	15.7	400	15.7	453	17.8	3455	136	1546	3409	521	1149
AZUD LUXON LDB 1000 S/2	920	36.2	570	22.5	630	24.8	240	9.4	372	14.5	240	9.4	65	7.6	303	11.9	1170	46.1	116	256	52	115
AZUD LUXON LDB 1000 S/3	920	36.2	570	22.5	630	24.8	240	9.4	372	14.5	240	9.4	65	7.6	303	11.9	1170	46.1	116	256	52	115
AZUD LUXON LDB 1800 S/3	1015	39.9	575	22.7	630	24.8	290	11.4	467	18.4	240	9.4	60	2.4	311	12.3	1270	50	131	288	54	119
AZUD LUXON LDB 2700 S/4	1120	44.1	610	24	700	27.5	500	13.9	562	22.1	290	11.4	116	4.6	302	11.9	1370	53.9	207	456	75	165
AZUD LUXON LDB 5400 S/6	1395	54.9	710	27.9	700	27.5	500	19.7	878	34.6	290	11.4	62	2.4	395	15.5	1675	65.9	292	644	94	207
AZUD LUXON LDB 5400 S/8	1395	54.9	710	27.9	700	27.5	500	19.7	878	34.6	290	11.4	62	2.4	395	15.5	1675	65.9	523	1153	304	670
AZUD LUXON LDB 8000 S/8	2190	86.2	750	29.5	800	31.5	600	23.6	1257	49.5	350	13.8	350	13.6	378	14.9	2620	103.2	891	1963	357	787
AZUD LUXON LDB 10600 S/10	2470	97.2	750	29.5	800	31.5	900	35.4	1532	60.3	350	13.8	350	13.6	378	14.9	2900	114.2	1022	2254	371	818
AZUD LUXON LDB 13200 S/10	2740	107.9	750	29.5	800	31.5	900	35.4	1807	71.1	350	13.8	350	13.6	378	14.9	3440	135.4	1179	2599	409	902
AZUD LUXON LDB 13200 S/12	2740	107.9	750	29.5	800	31.5	900	35.4	1807	71.1	350	13.8	350	13.6	378	14.9	3440	135.4	1179	2599	409	902
AZUD LUXON LDB 16500 S/12	2500	98.4	905	35.6	930	36.6	900	35.4	1570	61.8	400	15.7	400	15.7	453	17.8	3000	118.1	1422	3135	550	1213
AZUD LUXON LDB 16500 S/14	2500	98.4	905	35.6	930	36.6	900	35.4	1570	61.8	400	15.7	400	15.7	453	17.8	3000	118.1	1427	3145	554	1221
AZUD LUXON LDB 21300 S/14	2770	109.1	905	35.6	930	36.6	900	35.4	1845	72.6	400	15.7	400	15.7	453	17.8	3455	136	1690	3726	652	1437
AZUD LUXON LDB 21300 S/16	2770	109.1	905	35.6	930	36.6	900	35.4	1845	72.6	400	15.7	400	15.7	453	17.8	3455	136	1712	3775	672	1482

M=Minimal recommended distance for maintenance operations.